



ADELAIDE
INTERNATIONAL
SCHOOL

www.ais.edu.au



2020 PROSPECTUS

Cloud Campus





Adelaide International School AIS	01
What is AIS Cloud Campus?	02
Why choose AIS?	04
Why choose AIS Cloud Campus?	05
Any difference between the learning in AIS Cloud Campus and the Adelaide City Main Campus?	06
What can students obtain at AIS Cloud Campus?	07
AIS Cloud Campus courses introduction and strength	08
AIS Cloud Campus Online Teaching Methodology and Assessment	10
AIS Cloud Campus Course content	11
AIS Cloud Campus Class schedules	13
AIS Cloud Campus ICT requirements and support for online learning	14
Our teachers and students' comments on the AIS Cloud Campus	15
How to enrol ONLINE and enrolment time	16

CONTENTS

Adelaide International School AIS



Adelaide International School (AIS) belongs to Adelaide Education Group (AEG). AIS is an education provider that provides English for Primary and Secondary School Preparation, South Australian Certificate of Education (SACE) Preparation Course (equivalent to Year 10), SACE Stage 1 (Year 11), SACE Stage 2 (Year 12) and English Proficiency Evaluation Test (EPET) for international students.

AIS has now developed an exciting new venture Cloud Campus which is the delivery of preparation for school English Language Acquisition (EAP) courses online. By studying our Cloud Campus courses students, when they arrive in Adelaide, will be able to substantially reduce the time spent in English preparation courses at AIS before transitioning into mainstream classes. This could save as much as 6 months!



What is AIS Cloud Campus?



AIS Cloud Campus is an education project providing distance education and online education. The aim of the AIS Cloud Campus is to offer students remote learning without being on campus physically. Different to the general online learning which limits to the visual recording, AIS Cloud Campus offers visual face-to-face interaction with students and live teaching.

Students can complete 100% of courses online and gain access to primary school/high schools with their main courses.

By studying through AIS Cloud Campus you also have better access to what are known as the Alliance of Independent Schools SA, AISA schools. The alliance comprises premier schools in Adelaide.

Members schools include :

- 1.** Adelaide International School
- 2.** Blackfriars Priory School
- 3.** Concordia College
- 4.** Loreto College
- 5.** Maple Leaf College
- 6.** Mercedes College
- 7.** Our Lady of the Sacred Heart College (OLSH)
- 8.** Pembroke School
- 9.** Pulteney Grammar School
- 10.** Scotch College
- 11.** St Francis de Sales College
- 12.** St George College
- 13.** St Peter's Girls' School
- 14.** Trinity College
- 15.** University Senior College (USC)
- 16.** Wilderness School



AIS Online EAP Courses (English for Academic Purposes Courses)

EAP-Primary online (Preparatory and bridging course)

A full-time subject based English language acquisition course to assist in the admission into AISA Primary schools.



EAP-Secondary online (Preparatory and bridging course)

This course is delivered at two levels, lower and upper secondary. Which level is suitable depends on the student's age. Both courses are full-time subject based English language acquisition courses to assist in the admission into AISA Secondary Colleges and Schools.

Graduation from these EAP (Preparatory and Bridging) courses will substantially reduce the amount of time that a student will need to spend in AIS EAP courses when they arrive in Adelaide. Indeed, some graduates from the AIS online program may be able to join their AISA school directly.

EAP- Primary & Secondary online (Improvement course)

A part-time language acquisition program for improving English literacy.

Successful graduation from this course is likely to decrease the amount of time that a student will need to spend in AIS EAP courses when they arrive in Adelaide.

Why choose AIS?

AIS teachers are specialists in the teaching of English language to non-English speakers. They are a dedicated team and use quality techniques to deliver their online programs.

English for Primary and Secondary School Preparation programs are designed for the students who have limited language proficiency. AIS offers a packaged enrolment including English pathway, EAP, SACE Preparation and SACE programs for students.

AIS works with AISA schools, which have their own unique history and culture reflected in the education of their students including academic, music, sports etc. All AISA Secondary Colleges and Schools offer SACE, additionally some offer the IB Primary Years Programme (PYP), the IB Middle Years Programme (MYP) and the IB Diploma Programme (IB DIP) as well.



AIS has developed and administered the English Proficiency Evaluation Test (EPET). AISA schools consider this test as their preferred English language assessment. They recognize the EPET is more flexible, timely (results are available within 5 working days), and less time consuming and stressful for students than other similar tests. The EPET provides a good indication of how the student uses language for the types of work they will do in Australian classrooms. The EPET can be delivered face to face or online based on the student's location.

AIS Cloud Campus students will complete an EPET before they commence and when they conclude their studies.

AIS utilises EPET and English language programs to assist students identify an appropriate pathway including a suitable destination school.

AIS provides agents and parents with up to date information about AISA schools.

After completing the SACE, AIS and AISA students can choose to study at universities worldwide.



Why choose AIS Cloud Campus?

AIS cloud campus is particularly important to students who do not want to miss the deadline of AISA schools' 2021 enrolment. Students can complete AIS Cloud Campus Courses to support their enrolment for Australian High Schools.

Students will have the benefits of (1) flexible time allocation; (2) saving overseas living cost by choosing AIS cloud campus (3) highly qualified and trained staff and (4) reasonable pricing.

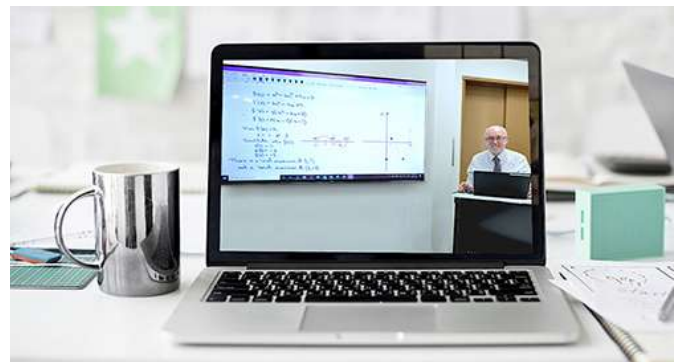
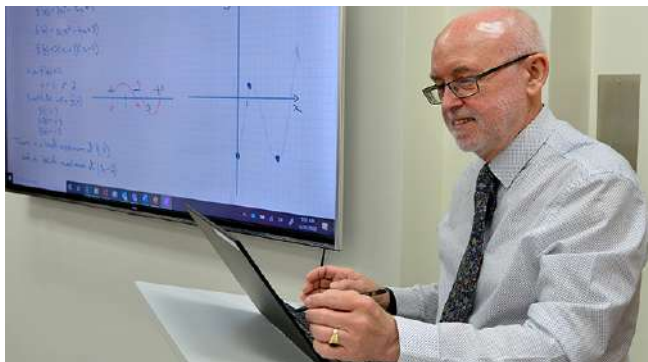
Importantly, AIS Cloud Campus contributes to managing the following circumstances that are restricting students from physically attending the AIS Adelaide City Campus:

- A.** Visa issues that are restricting international students from entering Australia on time.
- B.** Natural disasters and any other unpredictable crisis, such as the COVID19 outbreak.
- C.** Personal safety, health concern or family issues that hinder international students travel overseas.
- D.** Students want to experience Australian education in advance and save time.





Any difference between the learning in AIS Cloud Campus and the Adelaide City Main Campus?



	AIS Adelaide Main City Campus	AIS Cloud Campus
Attendance	Students physically attend classes at the campus.	Students access the visual classroom and teacher anywhere in the world that has suitable internet access.
Learning Environment	Face-to-face learning interaction in the campus	Visual face-to-face interaction and learning via remote education
Teaching Staff	Same	
Course Content	Same	
Textbook and other learning material	Same	
Student Support	Personalised Support	Personalised Support plus extra care with remote learning students, including online student tutoring and supervision.
Assessment and EXAM	Same	
Learning Outcomes	Same	
Education Pathways	Same	



How the AIS Cloud Campus courses are delivered and the support students receive

Online Study at AIS Cloud Campus

AIS Cloud learning enables students to learn from the comfort of their own home. Lessons can be live, taped or in video conferencing mode. Emails and phone calls may also be used to support student learning. Online resources such as videos, web quests, research engines and a host of online tools support student learning. Class sizes are small and all AIS staff are trained in online delivery. Online learning is fun, informative and meets qualification requirements.

Technology

AIS Cloud Campus is based on the Canvas Learning Management System but a combination of MS TEAMS, Canvas and OneNote is used throughout the delivery of the courses. Teachers upload learning materials (files, videos, and online forum) on the Canvas System and so students can access the course content 24/7.

AIS also provides free ICT assistance, via email, to help you connect to our learning platforms and assist you with any problems if they arise. This support is available at designated times.



Interaction with teachers and personalized student support

Our teachers adopt a differentiated approach to their teaching which means that programs are personalized to meet the learning needs of each individual. Learning is also supported in one to one session.

Academic support

As face to face lessons are interactive, students can have their questions answered in real time. Questions outside of these times can be lodged on Canvas and teachers will respond in a timely fashion. One to one consultation can be arranged, by negotiation, with academic staff.

Student Support and Expectations

Students are supported in their learning with regular feedback and assessment. In the secondary program, students are responsible for their own learning and treated as adult learners. Greater scaffolding and support is provided for the younger students.

All students are expected to be on time, well dressed and prepared for their online lessons. Set homework should be completed and full attention is expected during online learning.

Education pathway

Students who study at the AIS Cloud Campus EAP Courses (English for Academic Purposes Courses) can move to the AIS City Campus or an AISA school or College to complete the SACE.

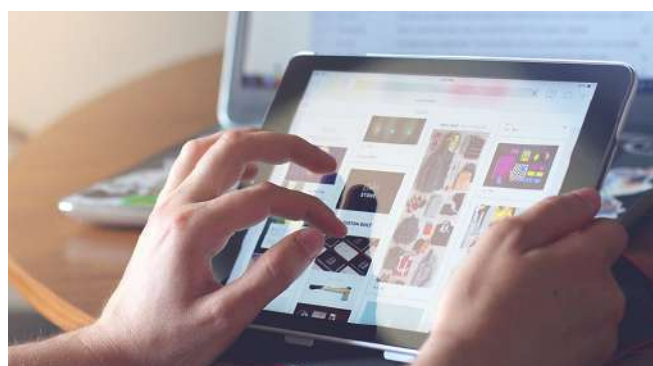
SACE graduates can continue their studies at well renowned universities around the world.

In summary, students have the following choices after AIS EAP Course graduation:

1. Enrolment at an AISA school Alliance School
2. Study SACE (South Australian Certificate of Education) (Stage 1 /Stage 2) at AIS.



AIS Cloud campus courses introduction and strength



Courses	EAP-Primary online (Preparatory and bridging course)	EAP-Secondary online (Preparatory and bridging course)	EAP- Primary & Secondary online (Improvement)
Strength	Successful completion enables admission AIS or face to face programs at AIS or AISA schools.	Successful completion enables admission to senior secondary programs at AIS or AISA schools.	improving English literacy that prepare for future English studies.
English requirements	It is recommended that applicants have done some prior study in English and has an interest in language learning. Need to take EPET Test.	IELTS 3.0 or AEAS 2.5 to 3.4. or Take EPET Test.	NIL although it is recommended that applicants have done some prior study in English and has an interest in language learning. Need to take EPET Test.
Entry Requirements	Must be at least 5 years old. Application forms available on the AIS website or by contacting the Admissions' Registrar at AIS.	Completed Year 7 in home country. Application forms available on the AIS website or by contacting the Admissions' Registrar at AIS.	Nil – level will be age and year level in home school dependent.
Intake Date	Continuous intake	Continuous intake	Continuous intake
Duration (weeks)	Full-Time 6-12 Months	Full-Time 6-12 Months	Part-time 6-12 Months
Model	Remote Learning	Remote Learning	Remote Learning
Tuition fees	\$500 per week	\$400 per week	\$200 per week
Materials fee	\$20 per week	\$20 per week	\$10 per week
Enrolment fee	\$400	\$400	\$200



Online Teaching Methodology and Assessment

Currently AIS are delivering a mixture of group and individual online lessons. Primary students are predominantly taught one on one or to a family group for two short periods each day. The teacher sets a variety of tasks to be followed up in the next one on one session. Teachers use online resources and direct students to use them.

Work is set to be done offline and activities are prepared by teachers on Canvas and students access as directed. Work is submitted online through the school's Learning Management System, Canvas.

Some parental supervision is required for the offline lessons as children of this age lose focus very quickly.

Lower and upper secondary school lessons are predominantly taught to the whole group although there are limited one to one teacher to student opportunities.

In all online EAP courses teachers use a variety of methods of assessment to predict student achievement. From time to time an online EPET type activity will occur to enable staff to judge overall progress against the EPET criteria. When presenting online group lessons the teacher establishes an 'online' teaching room to which students join. Teachers have touch screen computers and so can interact both verbally and electronically with students.

Students are expected to be logged in on time and be dressed in the clothes that they would normally wear to AIS. Students should be seated at a desk or a table when online.

Primary students should be in communal space and supervised by parents when online.





Course content



Students will be given an outline of the topics that they will study and the specific type of assessment that will be required.

Currently AIS can offer primary and secondary EAP courses online and has SACE Stage 1 (Year 11) courses in Maths, English, and Research Practices (Project). It is expected that the Year 11 SACE courses will be delivered online on 2021.

AIS also offers a suite of SACE Stage 2 subjects that enable students to achieve the SACE Certificate and obtain the pre-requisite for university entrance. At this stage SACE Stage 2 courses need to be studied at the AIS Adelaide Campus.

For the EAP Primary (Preparatory and bridging) online course a typical program would be:

- A.** 2 face to face online sessions per day on an EAP unit. One session in the morning and one in the afternoon. (30 minutes each session)
- B.** Work set in each face to face session is to be done between sessions and then followed up in the next one. (this will require approx. 60 minutes after each session)
- C.** Under the direction of their teachers, students access several online resources such as reading, spelling, and writing activities which will enhance general EAP skills. (45 minutes between face to face session)
- D.** Teacher prepared resources will also be emailed to students.
- E.** Some online tutoring is available upon request and at an additional cost.

The EAP Secondary online (preparatory and bridging) consists of two programs. Entrance into either the lower or upper secondary programs is determined by English ability and student age.

For EAP Lower Secondary online (Preparatory and bridging) the typical program is as follows:

- A.** 4 face to face sessions per week on an EAP based unit. (45 minutes each)
- B.** 5 face to face sessions a week on a second EAP unit. (50 minutes each)
- C.** 1 face to face session a week on EAP Mathematics. (30 minutes)
- D.** 5 self-guided sessions per week for students to work on general EAP skills. (45 mins each)
- E.** 1 face to face session per week is an individual session with the teacher. (30 minutes)
- F.** Students will be set work offline homework for at least 90 mins per day.
- G.** Teacher prepared resources will also be emailed to students.
- H.** Some online tutoring is available upon request and at an additional cost. Total course hours 19.5 per week.



For EAP Upper Secondary online (Preparatory and bridging) the typical program is as follows:

- A.** 5 face to face sessions per week on an EAP based unit. (45 minutes each)
- B.** 5 self-guided sessions per week for students to work on general EAP skills. (45 mins each)
- C.** 3 face to face sessions per week to study the Personal Learning plan – a prerequisite of SACE. (50 minutes each)
- D.** 1 face to face session per week on EAP Mathematics. (30 minutes)
- E.** 1 face to face session per week is an individual session with the teacher. (30 minutes)
- F.** Students will be set offline homework for at least 100 minutes per day.
- G.** Teacher prepared resources will also be emailed to students.
- H.** Some online tutoring is available upon request and at an additional cost. Total course hours 19.5 per week

These three programs are full-time courses and will be delivered Monday to Friday. The time for the additional tutor support, if requested, is by negotiation but would most likely occur on Saturday morning.

For EAP Primary and Secondary online (improvement) a typical program is as follows:

- A.** 1 face to face online session per week with the teacher on an EAP based unit. (1 hour)
- B.** 4 self-guided online sessions per week for students to work independently on general EAP skills. (45 minutes each)
- C.** 1 hour of offline work per week as directed by the teacher. Total course hours 5 per week.

This program is a part-time course. The online lesson with the teacher will occur on Saturday morning.





Class schedules

Most of our face to face teaching of the full-time online courses will take place between 10am CST and 5pm CST. Thus 8.30 to 3.30 in China and 7am to 2pm in Vietnam. Students can negotiate with AIS for the most suitable class time depending on the time zone difference in each country, which is subject to the confirmed study and time schedule.

Students will have access to resources required for their offline assignment work 24/7.

Additional tutoring support is available on the weekend by negotiation and at an additional cost.

AIS will attempt to meet the needs of students in relation to evening and weekend classes if required but this is dependent upon teacher availability. Course delivery could take place in school times or in negotiation with each country after careful consideration of local and international time differences.

A. The Teaching Program

Online teaching programs fall within South Australian school terms. During term times students may need to be online at least once per day; however individual learning may be adapted to suit student needs.

Below is an [example](#) of the timetable we are using for the students who are currently at AIS and are studying online. The Cloud Campus Timetable would be individualized for each participant.

Day/Time	Monday	Tuesday	Wednesday	Thursday	Friday
9-9.45	Lower Secibdary SW Resources	Lower Secibdary SW Resources	Lower Secibdary SW Resources	Lower Secibdary SW Resources	Lower Secibdary Skills
	Upper Secondary MH Ecotourism	Upper Secondary MH Ecotourism	Upper Secondary MH Ecotourism	Upper Secondary MH Ecotourism	Upper Secondary MH Ecotourism
9.45-10.30	All Students Skills	All Students Skills	All Students Skills	All Students Skills	All Students Skills
10.30-11.20	Lower Secondary MH Healthy Behaviours	PLP	PLP	PLP	Lower Secondary MH Healthy Behaviours
		US No PLP Dec Mak SW	US No PLP Dec Mak SW	US No PLP Dec Mak SW	
Break					
12-12.45	Lower Secondary MH Healthy Behaviours		Lower Secondary MH Healthy Behaviours		Lower Secondary MH Healthy Behaviours
12.45-1.15	Individual Session	Individual Session	Individual Session	Individual Session	Individual Session
Break					
2-2.30	Lower Secibdary Math	Individual Session	Individual Session	Individual Session	Individual Session
2.30-3	Upper Secibdary Math	Individual Session	Individual Session	Individual Session	Individual Session
3-3.30	Individual Session	Individual Session	Individual Session	Individual Session	Individual Session
3.30-4	Individual Session	Individual Session	Individual Session	Individual Session	Individual Session
What is the Skills session?	Reading comprehension, Reading Eggs, Mathletics-Online Ongoing programs		What is the Individual session?	One-one-one tutoring 1/2 hour per week	



ICT requirements and support for online learning

For online to be a positive experience a student must have:

- A.** Access to a reliable computer. (Windows 10 or Mac with the latest updates.)
- B.** The computer will need to have Microsoft Office (Word, Excel, PowerPoint ...) installed.
- C.** Access to a fast and reliable Internet service.
- D.** Must have microphone and earphones or speaker.

The AIS ICT department has developed several online self-help lessons on how best to use the programs that we will use, including both written instructions and tutorial videos. Students will be guided in the use of Canvas, with instruction given on how to join the lesson through the link. Teachers will be able to assist during the start-up phase in the one to one student sessions.

The IT Team is also available via email (servicedesk@ais.edu.au) or phone to work with students should they have any problems





A. Location and Requirements

The EPET can be completed in person or online. If in-person, it will take place at Adelaide International School. If online, we prefer ZOOM.

B. EPET Structure

The EPET has two parts: **1. An interview (10-15mins)** **2. A writing task (45mins)**

C. EPET Result Description

An EPET score is based on a written sample of work that is levelled against the Department for Education Literacy and Language Levels as they are aligned to a school Year level and the Australian Curriculum, Assessment and Reporting Authority (ACARA) phases.

An Interview is conducted prior to the written assessment to provide valuable insight to the interviewer into the students spoken and verbal comprehension, but it does not impact the EPET score.

Our teachers and students' comments on the AIS Cloud Campus

“



Year 12 student 2020

“I have found the process good; it is easy to see and watch what is required.
Better than a blackboard.”

EAP Student 2020

“Initially I found the online a little strange, but the teachers made it easy
for me to adjust.”



AIS staff member 2020

“Students maintained the work as long as they were organised to be online on time.
They were appropriately challenged and made good progress.”

”



How to enrol ONLINE and enrolment time

More information about AIS can be found on the school's website. www.ais.edu.au

Our Application Form is in the next page of this brochure. It also can be found on the website <http://www.ais.edu.au/apply-now/>, please download, fill out and email to the AIS Enrolment Registrar Sabrina Liew sabrina.liew@ais.edu.au or , Ms Wendy Fallshaw at Wendy.fallshaw@ais.edu.au

3 STEPS for Enrolment

STEP 1	Complete this Application for Enrolment Form
STEP 2	Gather the 4 Essential Pieces of Documentation listed below
STEP 3	Forward this completed Application for Enrolment Form and documentation to AIS

4 ESSENTIAL Pieces of Documentation (Certified)

STEP 1	Copy of Passport Details
STEP 2	Samples of any Written English Work you have completed
	Copies of any English Language Assessments
STEP 4	Copies of Previous or Current School Reports – translated in English

All students will be required to complete an AIS English Language Assessment upon enrolment

Study Selection (please tick (✓) the course and number of weeks you wish to study.)

English for Academic Purposes					
EAP Primary online (Preparatory and Bridging full-time course)	<input type="checkbox"/>	Number of weeks	<input type="checkbox"/>	Preferred start date	<input type="checkbox"/>
EAP Lower Secondary online (Preparatory and Bridging full-time course)	<input type="checkbox"/>	Number of weeks	<input type="checkbox"/>	Preferred start date	<input type="checkbox"/>
EAP Upper Secondary online (Preparatory and Bridging full-time course)	<input type="checkbox"/>	Number of weeks	<input type="checkbox"/>	Preferred start date	<input type="checkbox"/>
EAP Primary and Secondary online (part-time course)	<input type="checkbox"/>	Number of weeks	<input type="checkbox"/>	Preferred start date	<input type="checkbox"/>



Students Personal Details

Family Name			Given Name	
Date of Birth			Current Age	
Gender	Male		Female	
Passport Number				
Nationality				
Address in Home Country				
Country		Postcode/ZIP		
Telephone Number		Mobile Number		
Email Address				

Parent / Guardian Details

Father Family Name		Father Given Name	
Father's Address			
Country		Postcode/ZIP	
Telephone Number		Mobile Number	
Email Address			
Mother Family Name		Mother Given Name	
Mother's Address			
Country		Postcode/ZIP	
Telephone Number		Mobile Number	
Email Address			
Guardian Family Name		Guardian Given Name	
Guardian's Address			
Country		Postcode/ZIP	
Telephone Number		Mobile Number	
Email Address			



Emergency Person Contact Details

Family Name		Given Name	
Address			
Relationship with this person			
Telephone Number		Mobile Number	
Email Address			

Agent Contact Details

Name of Agency			
Agents Name			
Address			
Country		Postcode/ZIP	
Telephone Number		Mobile Number	
Email Address			

Authorisation: I _____ (Student Name)

- * Authorise Adelaide International School to collect, store and use my personal information within the limitations of the Privacy Principle contained in the Privacy Act 1998.
- * Authorise Adelaide International School to make relevant enquiries, where necessary, and in accordance with legislation regarding my application for the purpose of undertaking study.
- * Understand that my information will only be released to third parties in accordance with legislation.
- * Agree for my academic performance and conduct be made available to my parents and agent
- * Understand that I may at any time revoke my authorisation for Adelaide International School to release my information to third parties by notifying Adelaide International School and that implementation cannot be retrospective.
- * Have read and understand the content of the AIS Cloud Campus Student Handbook including my responsibilities.
- * Agree to abide by the terms and conditions as set out in the Student Handbook.
- * Authorise AEG/AIS to use student photos for promotion materials.

Student Signature

Date

Parent / Guardian Signature

Date



Office Use Only (this section is only to be completed by AIS)

Student ID:	
Student Provided all Documentation:	Yes <input type="checkbox"/> No <input type="checkbox"/>
Student Documentation was Approved:	Yes <input type="checkbox"/> No <input type="checkbox"/>
Student was Offered Enrolment:	Yes <input type="checkbox"/> No <input type="checkbox"/>
Student Accepted Offer of Enrolment:	Yes <input type="checkbox"/> No <input type="checkbox"/>
Invoice Fees Direct to Student	Yes <input type="checkbox"/> No <input type="checkbox"/>
Invoice Fees Direct to the Referring School	Yes <input type="checkbox"/> No <input type="checkbox"/>
Other (please nominate)	
Commencement Date:	





ADELAIDE
INTERNATIONAL

SCHOOL

Contact Us

Adelaide International School

(AIS) is a trading name of ADELAIDE EDUCATION GROUP PTY LTD.

Address: Level 4, 127 Rundle Mall, Adelaide, South Australia 5000

Phone: +61 8 8123 1786

Web: www.ais.edu.au

Email: info@ais.edu.au

CRICOS Provider No.: 03133G

School No. 398

ABN: 85 132 879 086

ELICOS Centre

Adelaide International School Level 4, 127 Rundle Mall,
Adelaide, South Australia 5000