

AIS Overseas Student VPN Manual

Please choose your laptop system:

 [Windows 10](#)

 [Mac OS](#)

Manual created by AIS IT Department

Version: v02082021

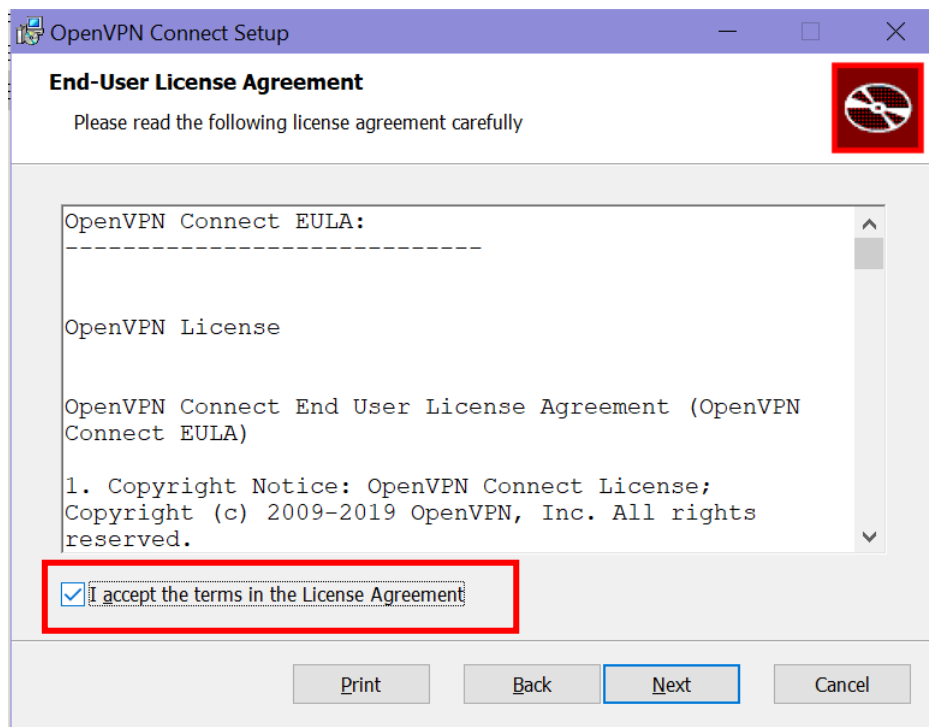


+ Windows 10

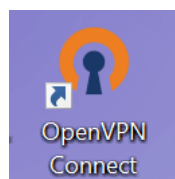
1. Click [here](#) to download the VPN installation packages.
2. Find the downloaded package, double click '**AEGopenvpn-connect-3.1.3.713_signed.msi**' to install Open VPN application.

Note: If your laptop gives you a pop-up window shows "Windows protected your PC" to stop installing, please click More info, then your will see Run anyway.

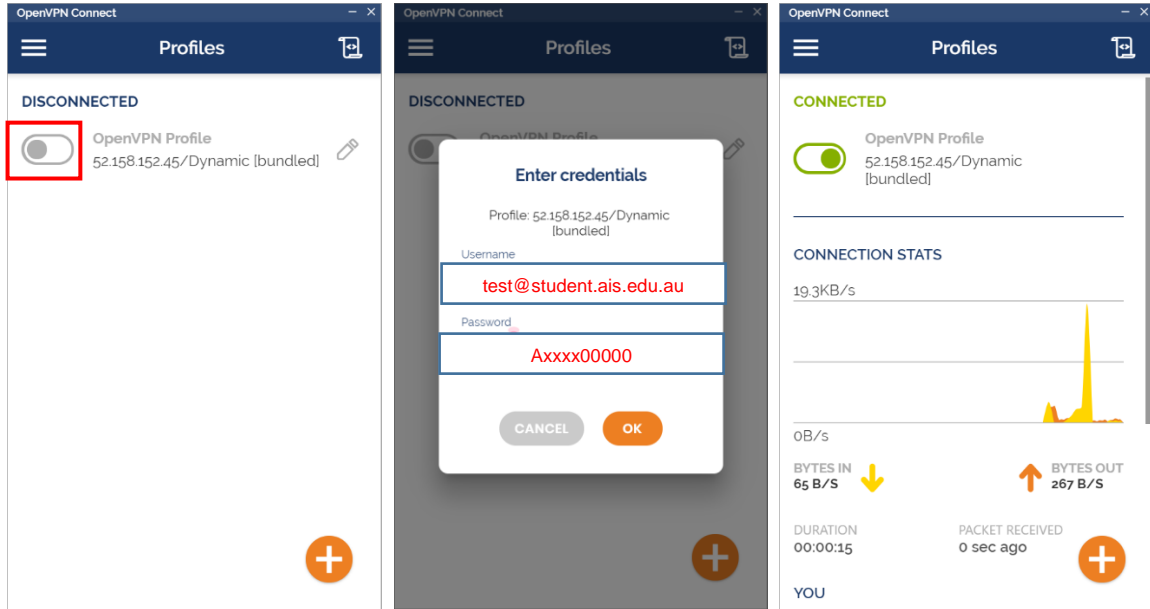
3. Follow the installation steps, remember to tick 'I accept the terms in the License Agreement'.



4. After you finished installation, please double click the Open VPN icon on your desktop (or find Open VPN in your start menu).



5. When you are in the Open VPN application home page, you will see the following picture (a). Click the switch button to turn on the VPN when you need it.



Picture (a)

Picture (b)

Picture (c)

6. As shown in Picture (b), Open VPN requires your AIS student email account to login.

For example, your student email address is: test@student.ais.edu.au; password is Axxxx00000. Then just input test@student.ais.edu.au under username, input Axxxx00000 under password.

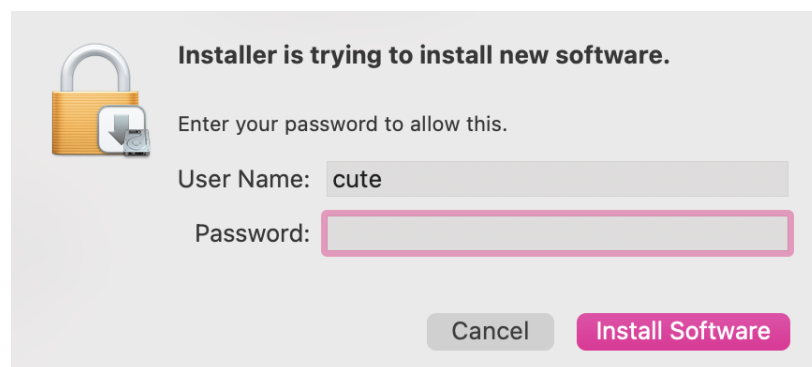
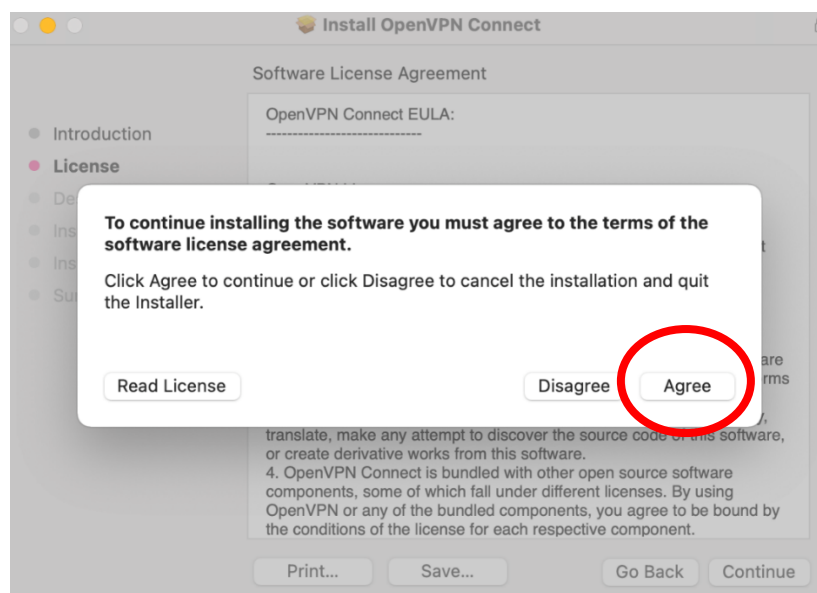
7. When you see **Connected**, shows in Picture (c), you can now use your VPN to view materials aboard.

(If you need any further help, please send an email to servicedesk@ais.edu.au)



Mac OS

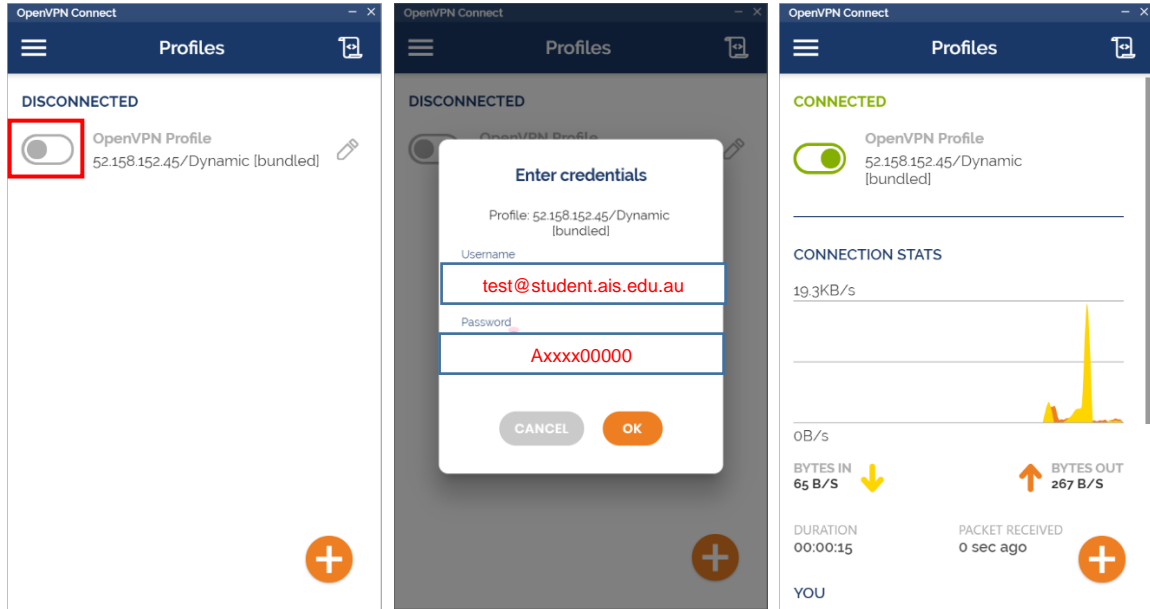
1. Click [here](#) to download the VPN installation packages.
2. Find the downloaded package, double click 'AEGopenvpn-connect-3.1.1.1089_signed.dmg' to install Open VPN application.
3. Follow the installation steps, remember to click agree when you get a pop-up window, and input your laptop lock screen password.



4. After you finished installation, please double click the Open VPN icon in your application list (or use Spotlight search find Open VPN).



5. When you are in the OpenVPN application home page, you will see the following picture (a). Click the switch button to turn on the VPN when you need it.



Picture (a)

Picture (b)

Picture (c)

6. As shown in Picture (b), OpenVPN requires your AIS student email account to login.

For example, your student email address is: test@student.ais.edu.au; password is Axxxx00000. Then just input test@student.ais.edu.au under username, input Axxxx00000 under password.

7. When you see **Connected**, shows in Picture (c), you can now use your VPN to view materials aboard.

(If you need any further help, please send an email to servicedesk@ais.edu.au)

