

# Printer manual

## Windows 10

## Apple Computer IOS

*(Connect to StudentWIFI before you print)*

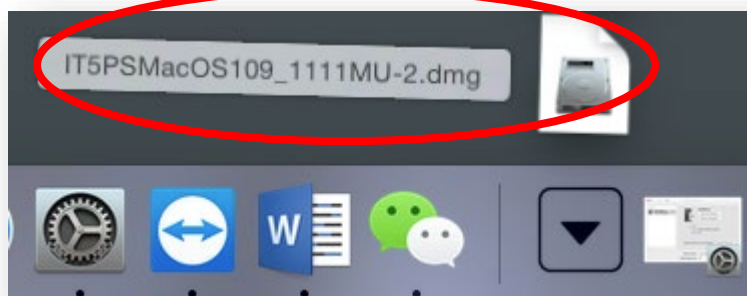
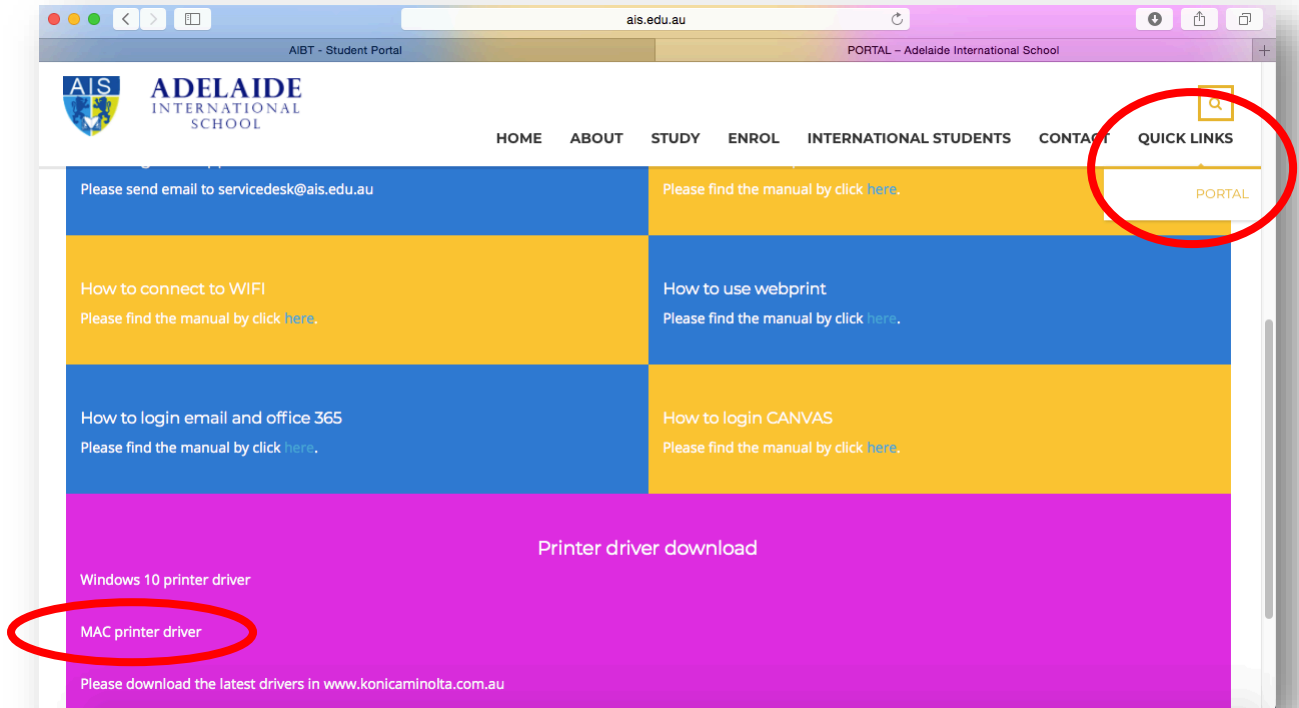
### Windows 10

1. Find **Printer & Scanners** in System setting.
  2. Click **add a printer or scanner**.
  3. Choose **Student Printer**, and then click **Add device**.
  4. Input your account (**ais** student ID) and password when it is necessary.
- **If you cannot find this printer**
    5. Please click **The printer that I want isn't listed**.
    6. Choose **Select a shared printer by name**, and then type **\\192.168.0.15\Student Printer**, click **next** until the end.
  - **If you miss printer drivers**
    7. Please find printer drivers on AIS website/quick links/portal/ Windows 10 printer driver, if this driver type is not suitable for your device, please find a proper one on [www.konicaminolta.com.au](http://www.konicaminolta.com.au)
    8. After you download it, please repeat step5.

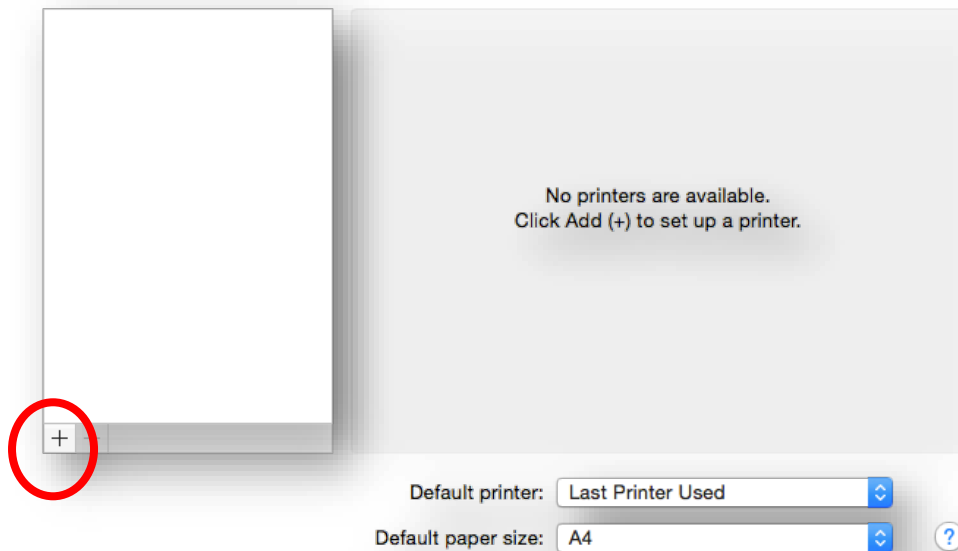


## Apple Computer IOS

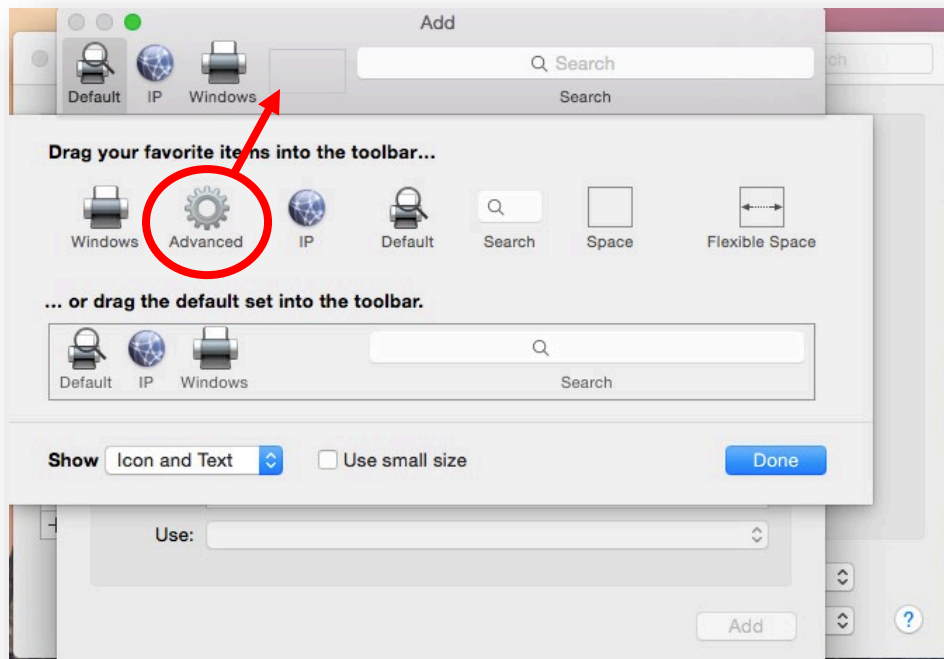
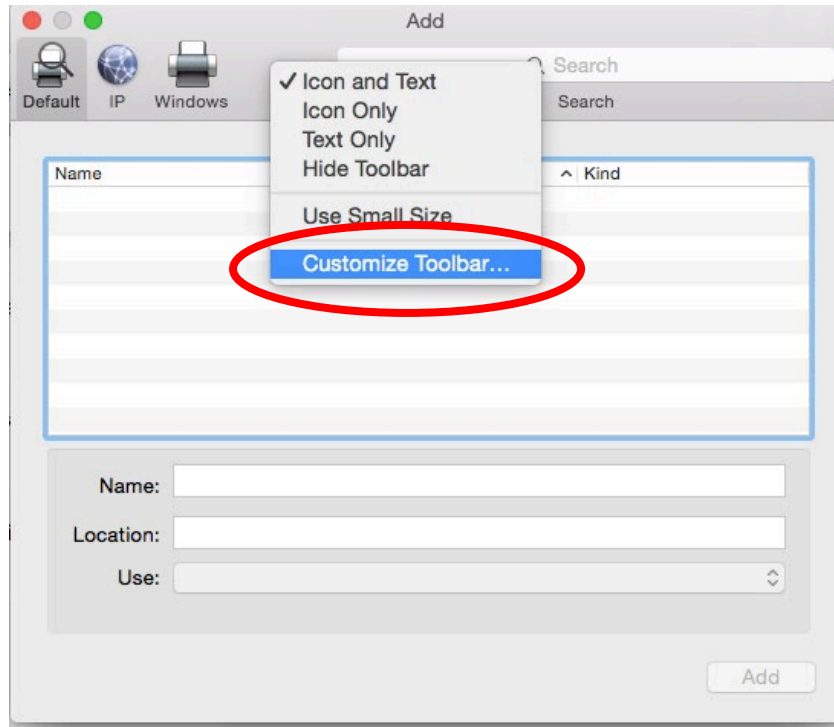
1. Please download the printer driver from AIS website/quick links/portal/MAC printer driver, and then click the downloaded file to install it.



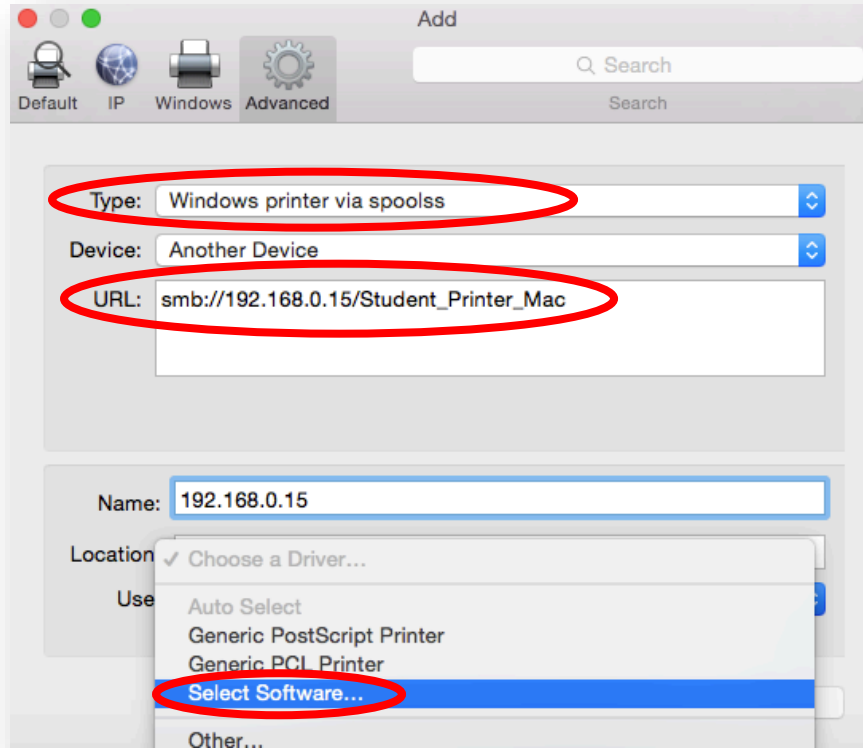
2. Find **Printer and Scanner** in **System Preference**, click '+' button to add a printer.



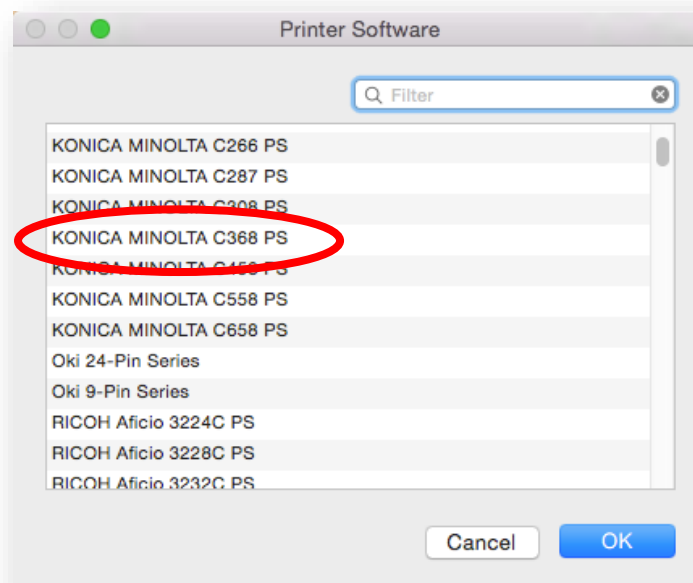
3. Right click the blank area of the toolbar and then choose **customize toolbar**, drag the **advanced icon** to the toolbar, then click **done**.



4. Under Advanced, choose **Windows printer via spoolss** from the dropdown menu of **Type**.
5. Type on URL column: **smb://192.168.0.15/Student\_Printer\_Mac**



6. Use printer software **KONICA MINOLTA C368 PS**, and then click **Add**.



7. Input your account (**ais** student ID) and password when it is necessary.

*(If you need any further help, please send an email to [servicedesk@ais.edu.au](mailto:servicedesk@ais.edu.au))*

